

Liviu Nichiforel

**Challenges in private forest management
in Romania – is forest certification a
solution?**

Forest in the communist time

- Entirely in public ownership
- Centralized decisions on management principles – providing public services and forest protection
- Traditional forest management rules based on sustainable yield principle and multi-functionality
- Strong adherence to rules and regulation: socialist legacy of strong technical forestry (Lawrence, 2009, For Pol Econ) or normativism (Brukas et al, 2009, Baltic For)
 - the state by tradition relies on command and controls instruments

1986-1988

TN 1 – artificial regeneration


TN 2 – recruitments and thinning

TN 3 – natural regeneration

TN 4 – timber evaluation

TN 5 – management planning

TN 6 – pests and insects

- 
- Semi-natural forest management
 - Small clear cuts
 - Long rotation (80-160 years)
 - Large period of sanitation cuttings (30-50 years)
 - Long regeneration periods (15-30 years)

What has changed in the post-socialist countries?

- *Significant changes in the structure of property rights*

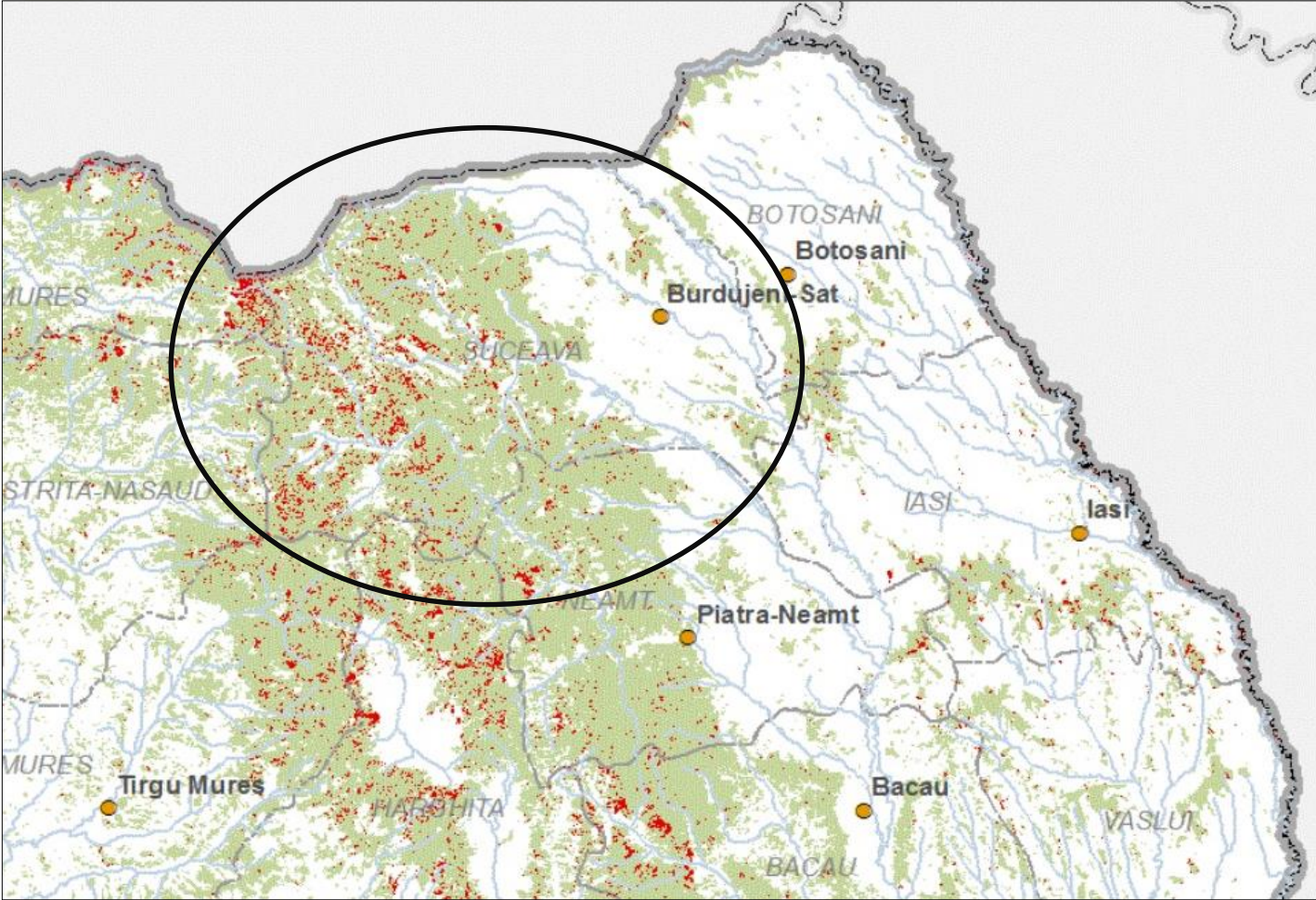


- *Changes in the forest policy – forest code (1996, 2008) national forest programs, national actions plans*
- *Little has formally changed in respect to the strong technical forestry system*

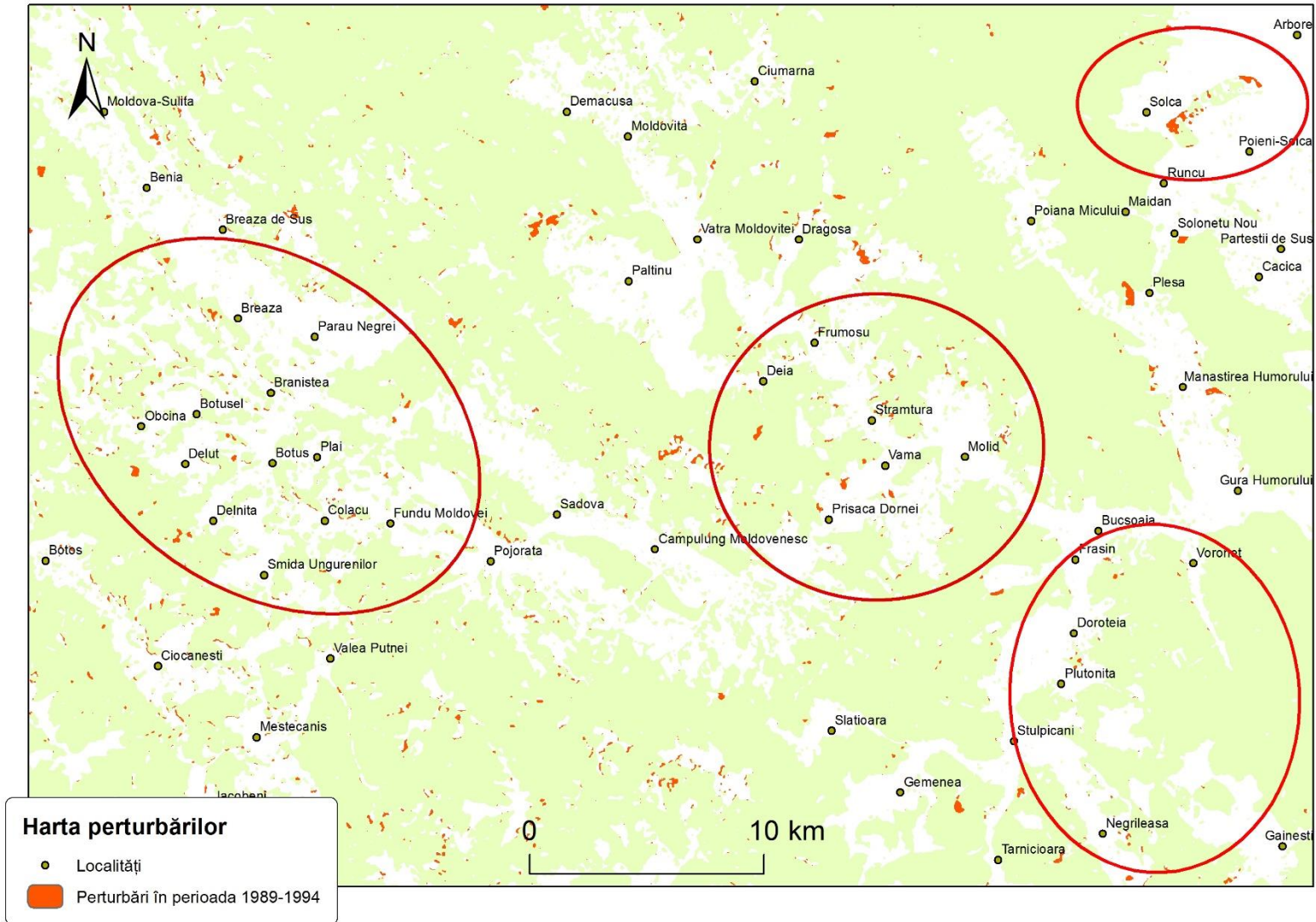
Key bottleneck

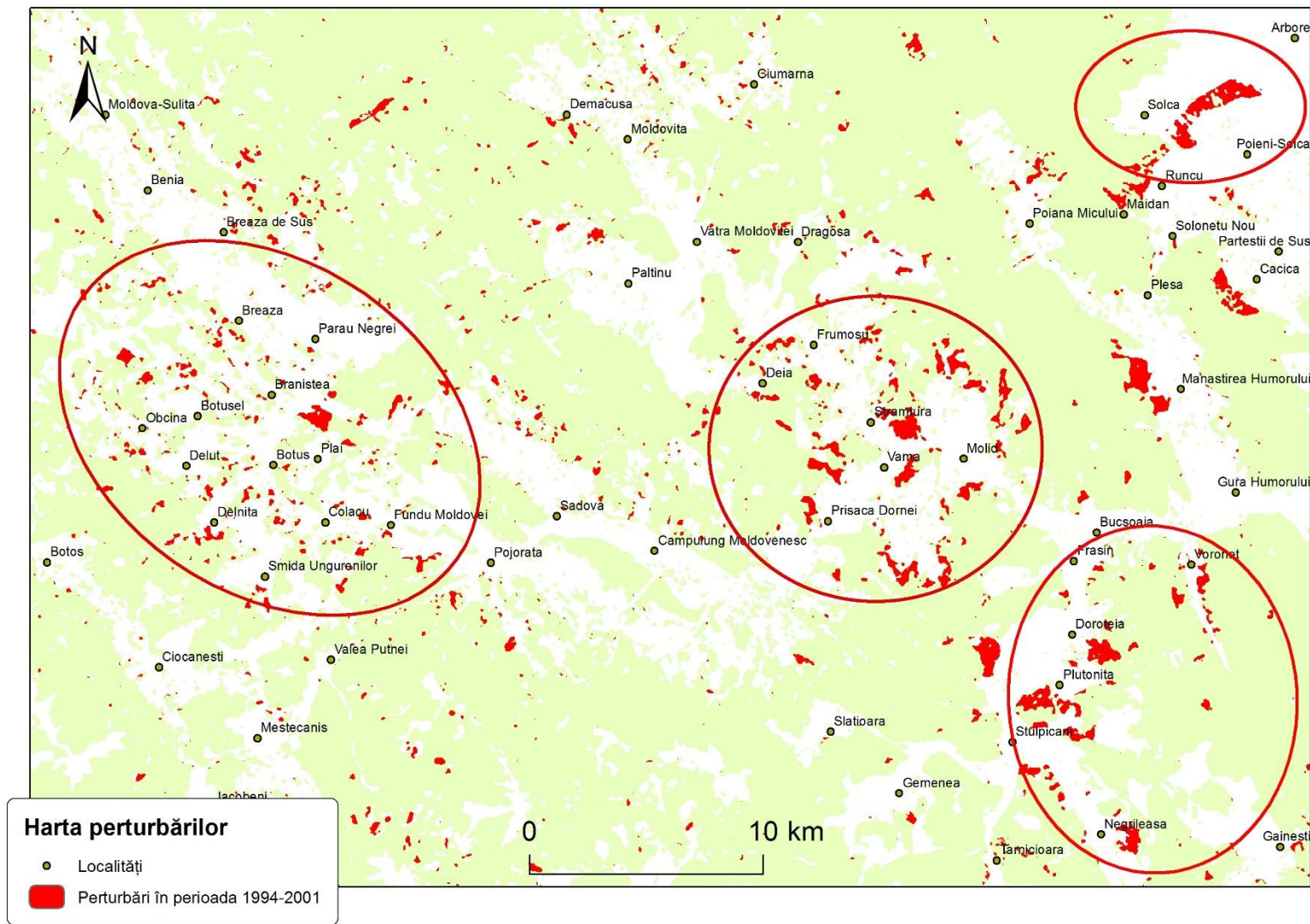
- Serious policy failures especially in the implementations of the rules in private forestry
 - Windthrow and sanitation cuttings as a solution “to legalize” timber extraction
- Large scale forest ecosystem disturbances

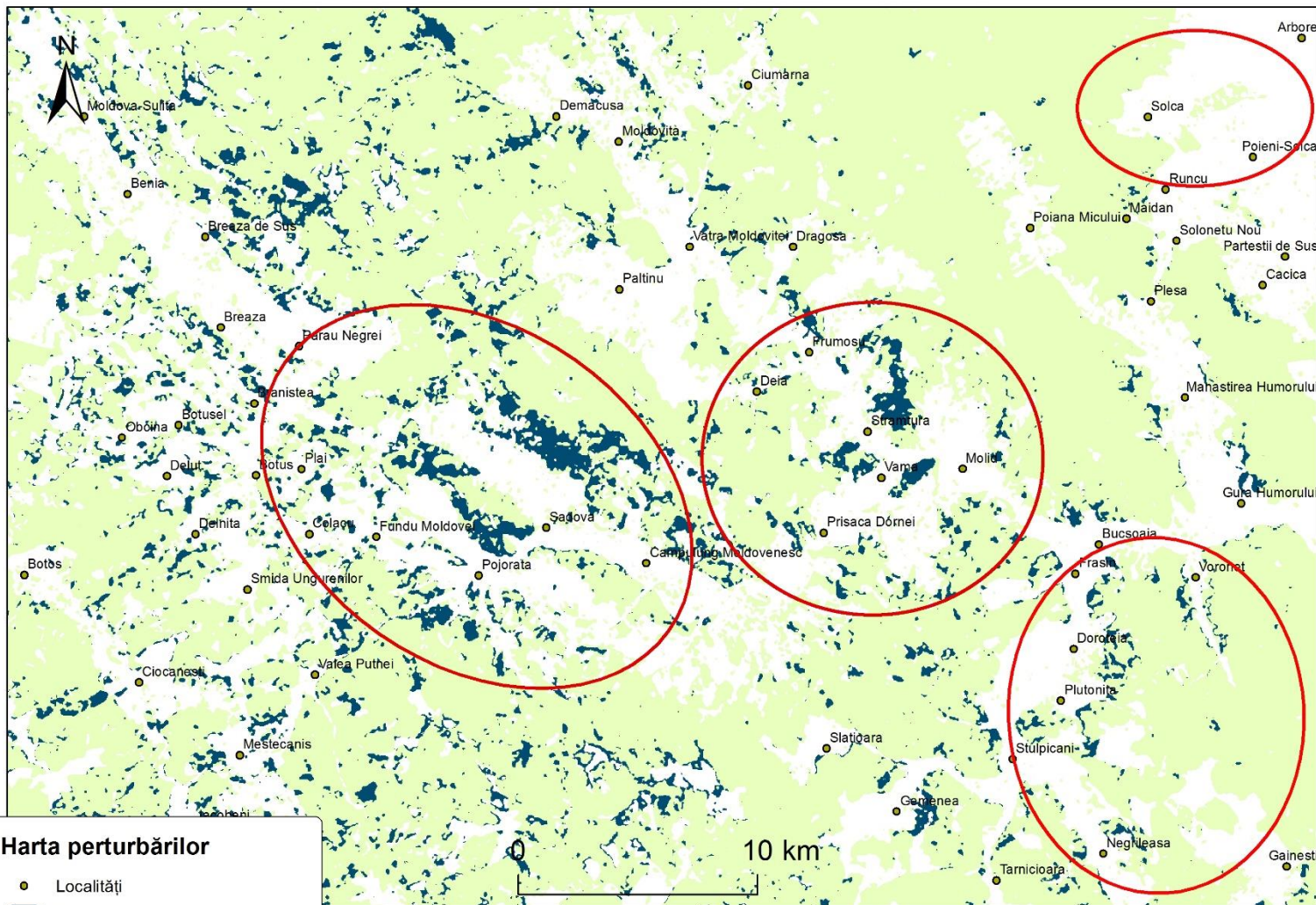
GREENPEACE

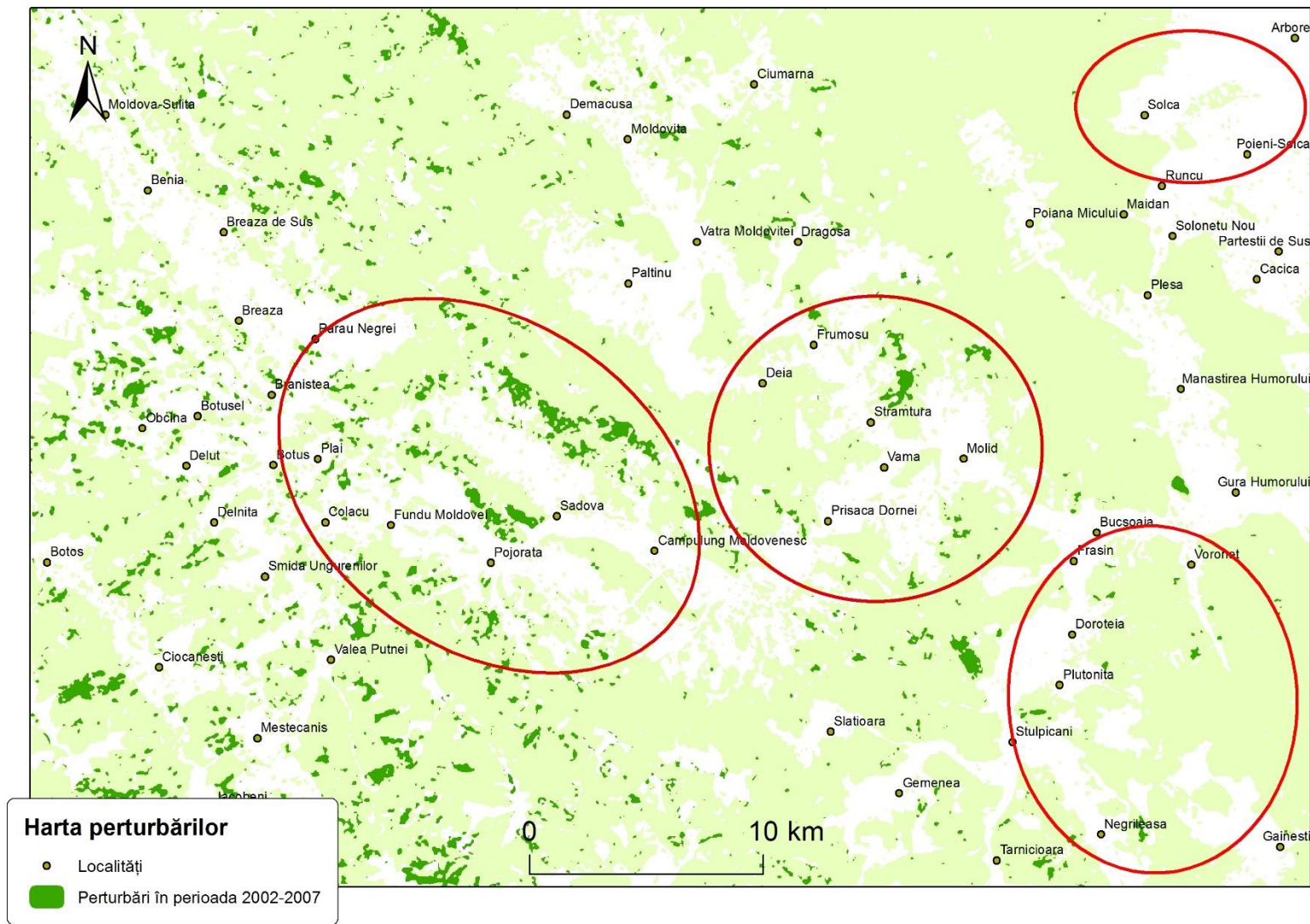


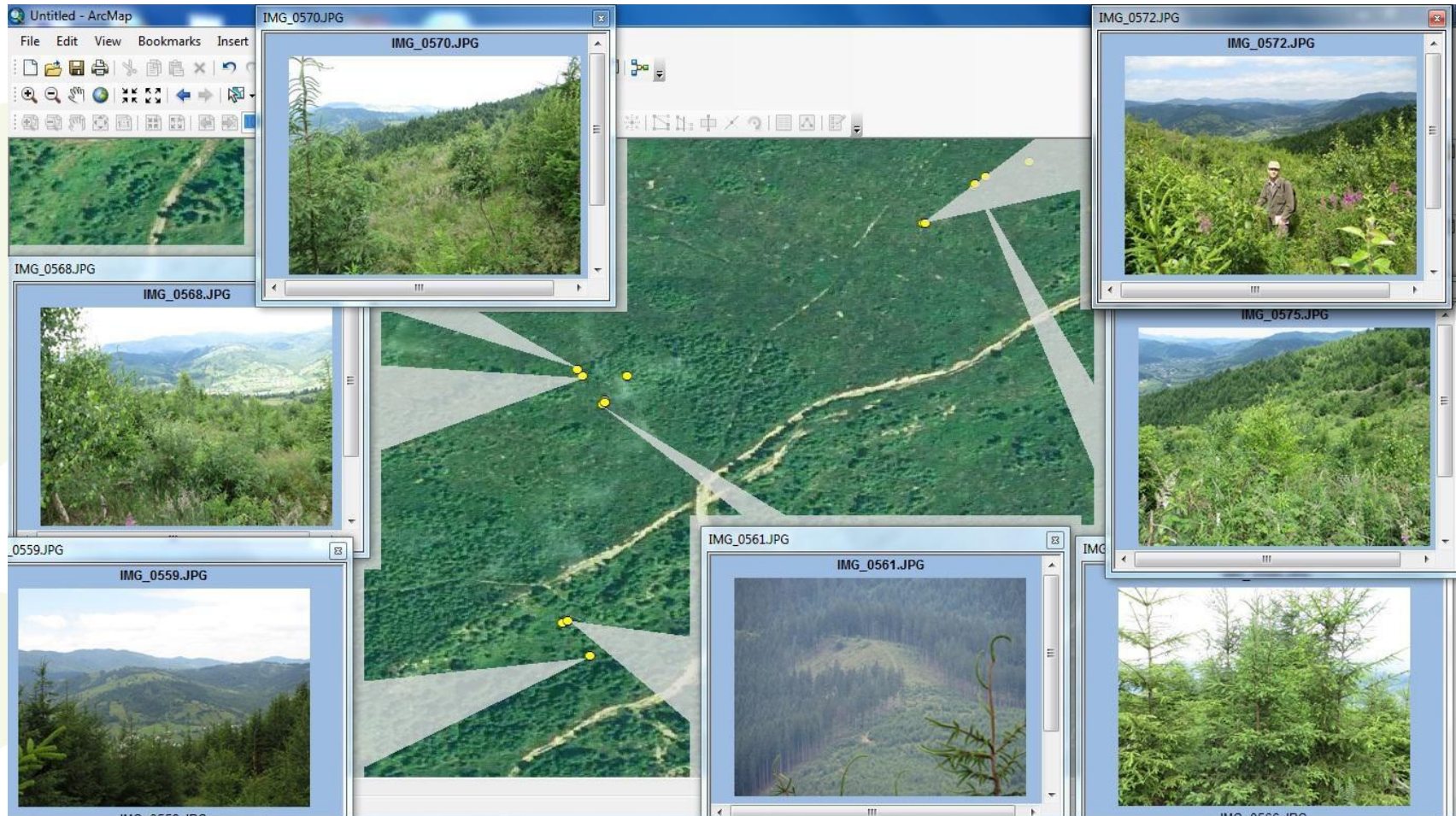
Disturbance maps











“Cut and leave” management pattern in small scale private forestry: natural succession of species – spontaneous adaptation

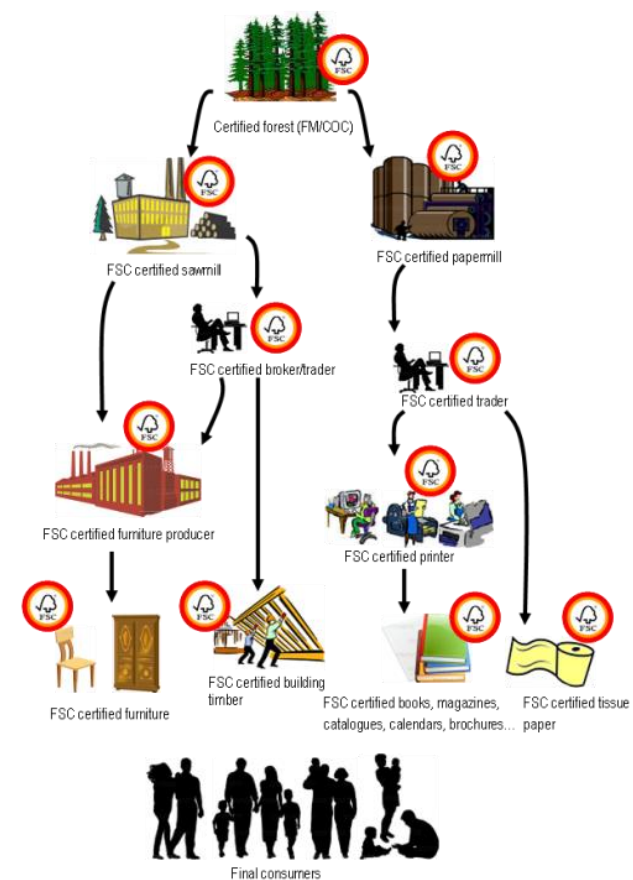
IS FOREST CERTIFICATION A SOLUTION TO PRIVATE FOREST MANAGEMENT?

Perceptions of managers of private forests units
FSC® certified

July 2014



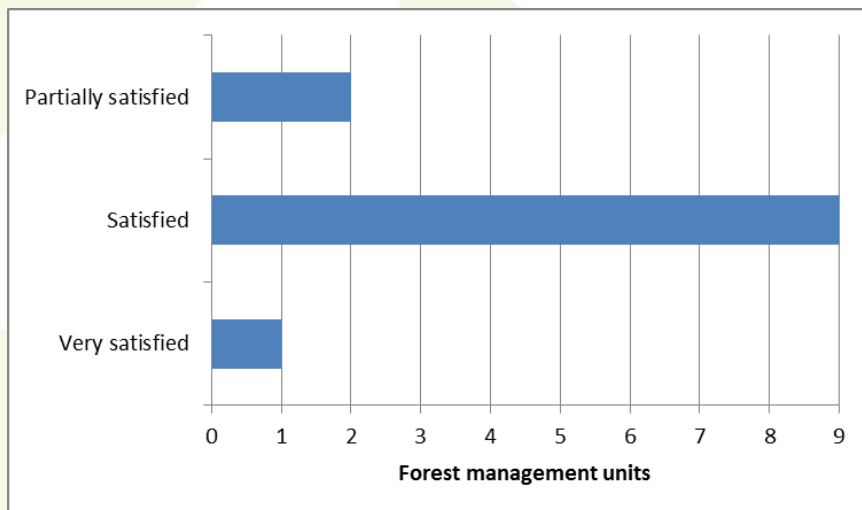
| No | Forest Administration | Area [ha] | Answers |
|--------------|---|-----------------|--------------|
| 1 | Ocolul Silvic Municipal Baia Mare R.A. | 8452 | Yes |
| 2 | Ocolul Silvic Privat Baraolt | 14291 | Yes |
| 3 | Ocolul Silvic Pădurile Șincii R.A. | 14875.3 | Yes |
| 4 | RPL Kronstadt R.A. | 13487.40 | Yes |
| 5 | RPL Ocolul Silvic Pădurile Făgărașului R.A. | 22313.20 | No |
| 6 | RPL A Pădurilor Piatra Craiului R.A. | 9450.00 | No |
| 7 | S.C. Ocol Silvic Cascade Empire S.R.L | 13618.80 | Yes |
| 8 | RRPL a Pădurilor Stejarul R.A. | 8779.40 | Yes |
| 9 | Ocolul Silvic Ciucaș R.A. | 5862.20 | Yes |
| 10 | Ocolul Silvic Comunal Telciu R.A. | 17573.00 | No |
| 11 | S.C. Ocolul Silvic de Regim Gheorgheni SA | | Yes |
| 12 | Ocolul Silvic Privat Frumoasa - M- Ciuc | | Yes |
| 13 | Ocolul Silvic Privat Praid | 69024.00 | Yes |
| 14 | Ocolul Silvic Particular Liban - Zetea | | Yes |
| 15 | Ocolul Silvic Privat Odorheiu Secuiesc | | Yes |
| Total | | 175413,1 | 12/15 |



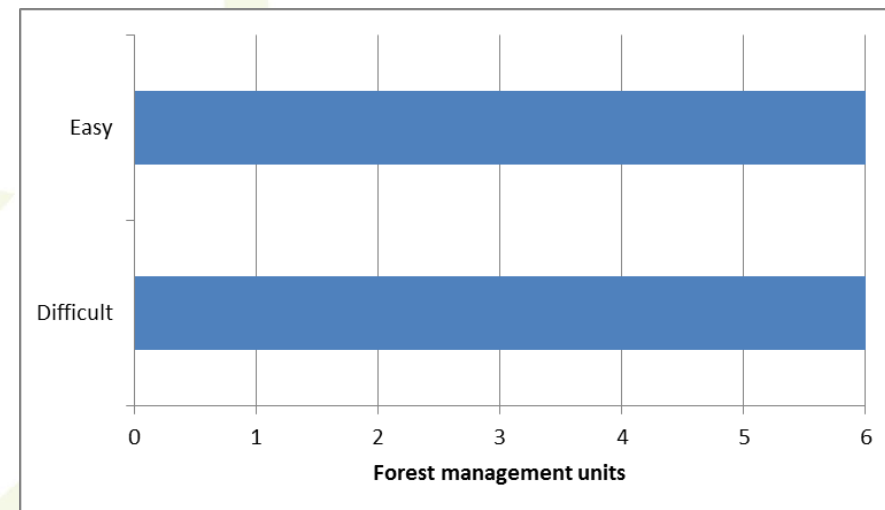
Main rationality when certifying the forest

| Rationality | Frequency |
|---|-----------|
| Recognition of sustainable forest management | 4 |
| Improving the forest management | 4 |
| Positive public image | 2 |
| Market demand for certified products | 3 |
| Better valorisation of timber | 5 |
| Perspectives for market development- new buyers | 2 |

Level of satisfaction with the certification



Difficulty of the certification process



Perceptions about forest certification

| Statement | Strongly disagree | Partially agree | Agree | Strongly agree |
|---|-------------------|-----------------|-------|----------------|
| [Forest certification has resulted in a better commercialisation of timber] | 1 | 6 | 5 | 0 |
| [Forest certification has contributed to the reduction of illegal logging at the regional level] | 6 | 4 | 2 | 0 |
| [Forest certification contributes to the preservation of high conservation value forests] | 1 | 2 | 6 | 3 |
| [Forest certification contributed to an increase in work safety along with the forest harvesting process] | 0 | 1 | 8 | 3 |
| [Forest certification has contributed to a better communication with local communities] | 2 | 4 | 5 | 1 |
| [Forest certification imposes measures against technical norms] | 8 | 3 | 1 | 0 |
| [Forest certification involves costs higher than the benefits] | 6 | 6 | | |
| [Forest certification is just a bureaucratic tools only with theoretical benefits] | 7 | 5 | 0 | 0 |

Main problems in implementing the forest certification

| Statement | Frequency |
|--|--------------|
| Prohibiting the use of river bands for timber transportation | 10/12 |
| Assuring the safety equipment for timber harvesting | 4/12 |
| The identification of HCVF | 4/12 |
| Consultation with local communities | 2/12 |
| The impossibility to use chemical substances for forest protection | 2/12 |
| Assuring the 5% of strictly protected areas and 10% of conservation areas | 1/12 |
| Assuring the maintenance of the dead wood | 0/12 |
| Others [bureaucratic hardness] | 1/12 |

Directions for action

